

# Osamu James Nakagawa

April 11 – May 31, 2014



## Gama Caves

1

*Gama #016, 2011*

17 x 24"

(Image size: 14 x 21")

Archival Pigment Inkjet Print

Edition 1/7



2

*Gama #017, 2011*

17 x 24"

(Image size: 14 x 21")

Archival Pigment Inkjet Print

Edition 1/7



3

*Gama #033, 2011*

17 x 24"

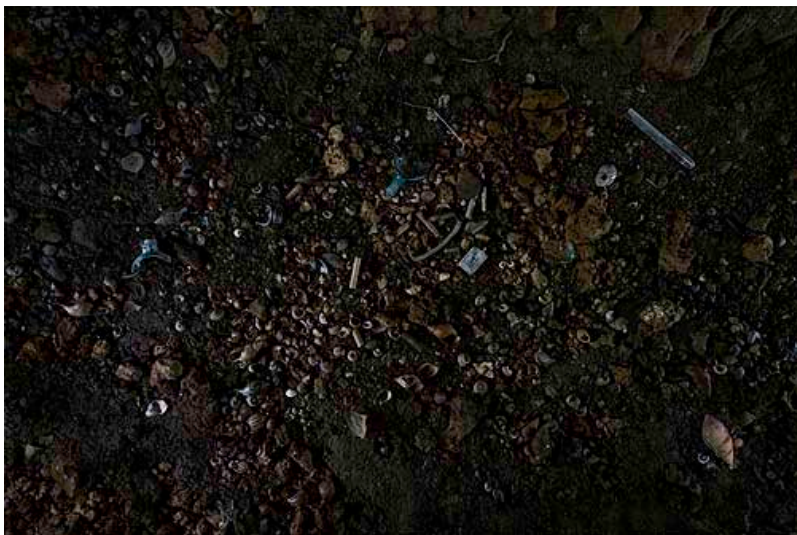
(Image size: 14 x 21")

Archival Pigment Inkjet Print

Edition 1/7



*All prints are signed, titled and numbered on print verso. Prices include the price of mounting on Sintra with brace. Additional size, edition, & price information available upon request.*



4

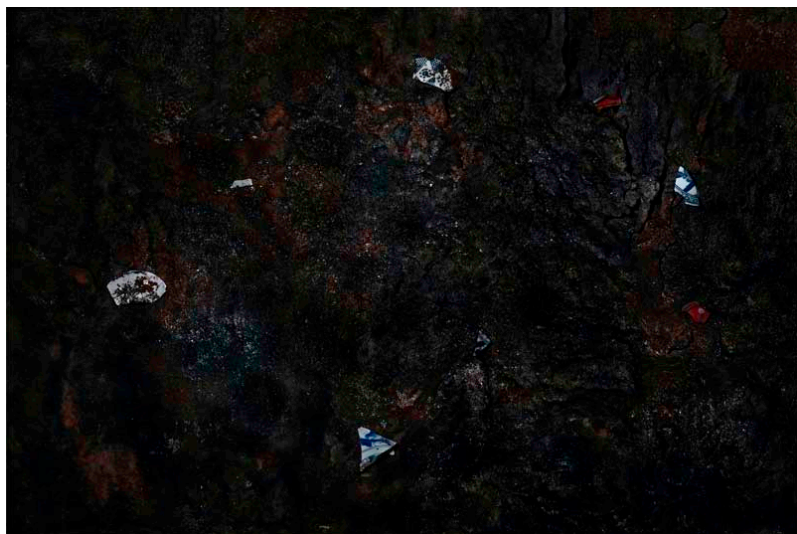
*Gama #013, 2010*

17 x 24"

(Image size: 14 x 21")

Archival Pigment Inkjet Print

Edition 1/7



5

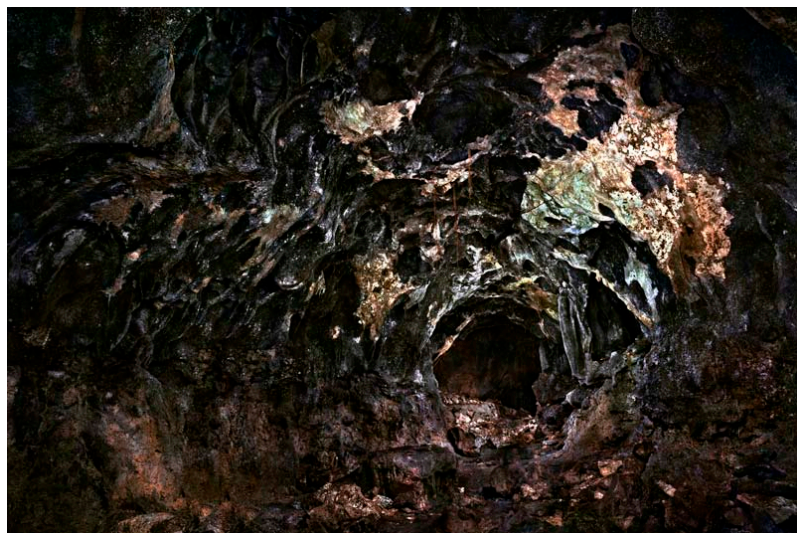
*Gama #011, 2009*

17 x 24"

(Image size: 14 x 21 ")

Archival Pigment Inkjet Print

Edition 2/7



6

*Gama#009, 2010*

40 x 60"

Archival Pigment Inkjet Print

Edition 1/5

*All prints are signed, titled and numbered on print verso. Prices include the price of mounting on Sintra with brace. Additional size, edition, & price information available upon request.*





7

*Gama #010*, 2010

40 x 60"

Archival Pigment Inkjet Print

Edition 1/5



8

*Gama #021*, 2011

40 x 80"

Archival Pigment Inkjet Print

Edition 1/3



9

*Gama #012*, 2010

40 x 60 "

Archival Pigment Inkjet Print

Edition 3/5

*All prints are signed, titled and numbered on print verso. Prices include the price of mounting on Sintra with brace. Additional size, edition, & price information available upon request.*



10

*Gama #018, 2011*

40 x 60 "

Archival Pigment Inkjet Print

Edition 1/5



11

*Gama #023, 2011*

40 x 80 "

Archival Pigment Inkjet Print

Edition 1/3

*All prints are signed, titled and numbered on print verso. Prices include the price of mounting on Sintra with brace. Additional size, edition, & price information available upon request.*