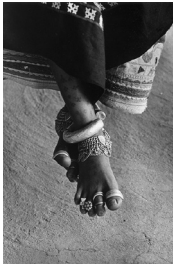


# Transitions and Trajectories

## The Photographs of Bhupendra Karia



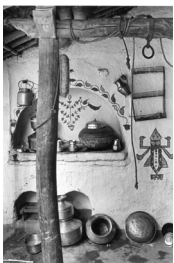
*Lamp and Two Umbrellas, Baroda, 1968*



*Woman's Feet with Bangles, Bhavnagar, 1969*



*Turban and Gun, Bhavnagar, 1969*



*Painted Wall with Brass Pots, Dewat, 1969*



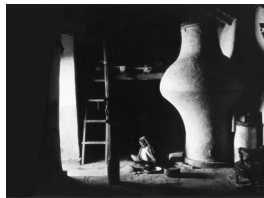
*Hand Print on Wall, 1968*



*Porch with Carved Post, Gujarat, 1969*



*Peasant's Foot on Cart, Bhuj, Kutch, 1968*



*Woman and Silo, Bhakarla, 1968*



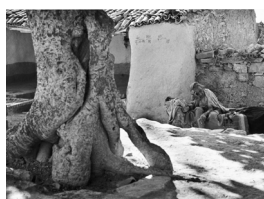
*Man and Gramophone, Janagadh, Rajkot, 1969*



*Old Bombay Dwellings, Bombay, 1970*



*View from Porch, Bombay, 1961*



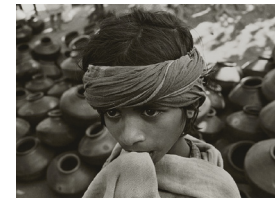
*Old Man by Gnarled Tree, Bhakarla, 1969*



*Old Woman with Hand to Face, Bhavnagar, 1969*



*Oil Lamps in House and Moon, Bhakarla, 1969*



*Boy with Pots, Chota, Udaipur, 1968*



*Birdcage and Saris on Porch, Sankheda, 1967*



*Abandoned Child on Road, Daneti, Kutch, 1968*



*Pots and Sari on Porch, Babra, 1967*

All prints are gelatin silver, modern prints. Each print is authenticated by the Estate of Bhupendra Karia with a stamp, noting title and edition number. Each image in the limited edition portfolio is available in two sizes:

5.5 x 8.75" image size Edition of 10      14 . x 19" image size Edition of 5

A complete set of the entire portfolio of 18 works is available upon request.

Vintage, gelatin silver prints made by the artist are available.

For additional information contact [info@sepieaeye.com](mailto:info@sepieaeye.com)

